

ComTest-AUSC Thick-walled Cycling Header Development - Phase I

Robert Schrecengost

R&D Program Manager, Boilers

March 23, 2017

Imagination at work

GE Proprietary Information—Class III (Confidential)
Export Controlled—U.S. Government approval is required prior
to export from the U.S., re-export from a third country, or
release to a foreign national wherever located.

Thick-walled Cycling Header Development Acknowledgements

DOE NETL

- Otis Mills
- Vito Cedro

GE Power

- Reddy Ganta
- Jim Pschirer
- John Marion
- Bruce Wilhelm
- Wei Zhang
- Yen-Ming Chen
- Zhiquan Zhou

GE Global Research

- Monica Soare
- Chen Shen



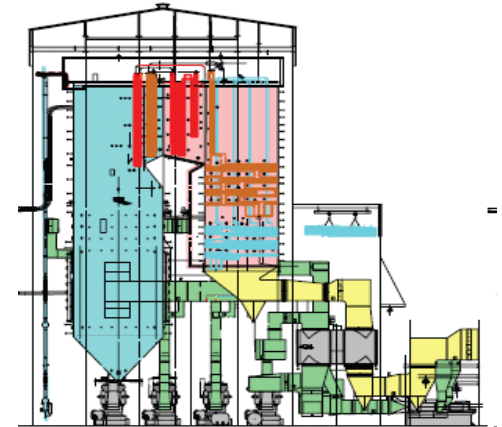
Thick-walled Cycling Header Development Agenda

- **Technical Background**
- **Statement of Objectives**
- **Potential Significance**
- **Project Team**
- **Technical Approach**



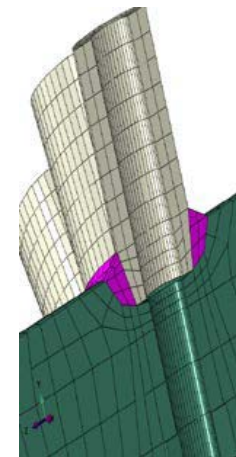
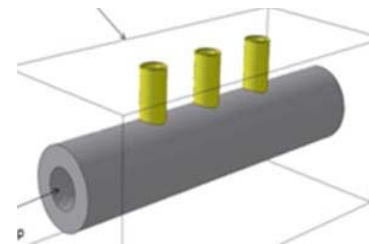
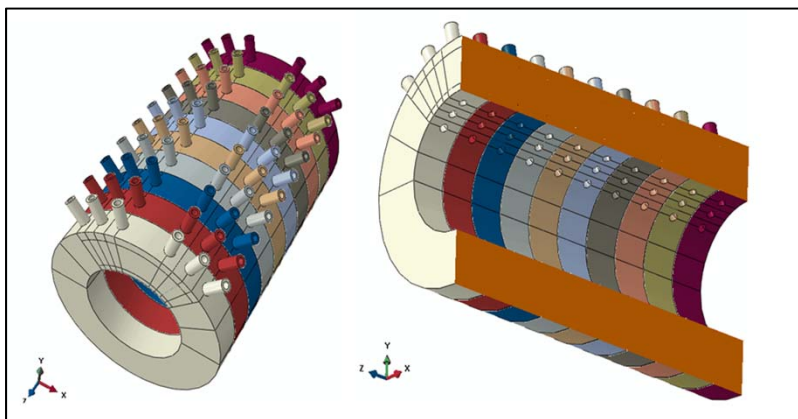
Thick-walled Cycling Header Development Technical Background

- Conceptual AUSC Boiler design steam cycle
 - temperatures are 730/760°C (1350/1400°F)
 - pressures 240-350 bar (3500-5200 psi)
- Future boiler designs require operation in daily and weekly cycling mode
- Startup-shutdowns such as weekly warm-starts have high ramp rates, 1.5% to 5% MCR/min
- Critical high temperature components in the boiler, such as superheater and reheater outlet headers, require latest high creep strength nickel-based superalloys Inconel 740H and Haynes 282



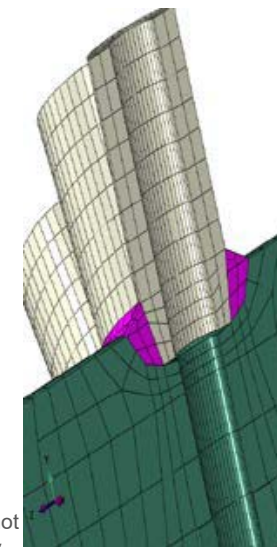
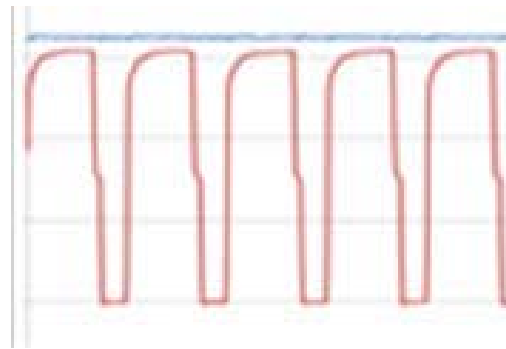
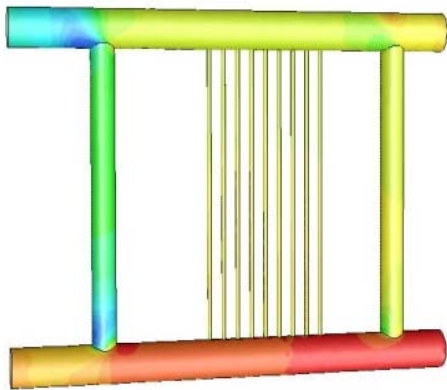
Thick-walled Cycling Header Development Technical Background

- SH outlet headers for high pressures, even with the high strength superalloys, require large wall thicknesses, in the range of 125 to 150mm (5 to 6")
- Thick walls and high ramp rates subject the headers to very high thermal cycling stresses causing
 - High cyclic usage of the material fatigue limits
 - Creep strain accumulation over the duration of the design life.
- Tube boreholes and outlet nozzle connection welds cause stress concentration effects and limit design fatigue/creep life



Thick-walled Cycling Header Development Technical Background

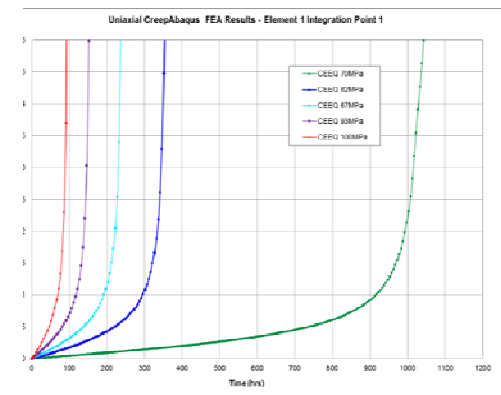
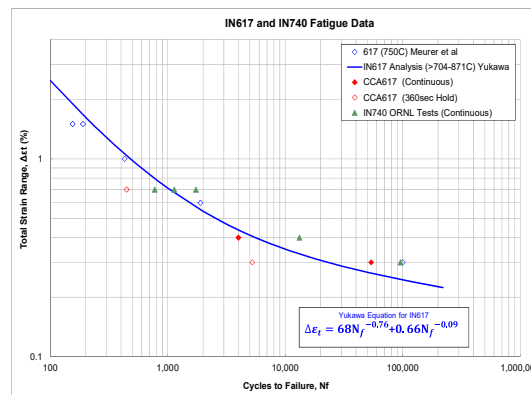
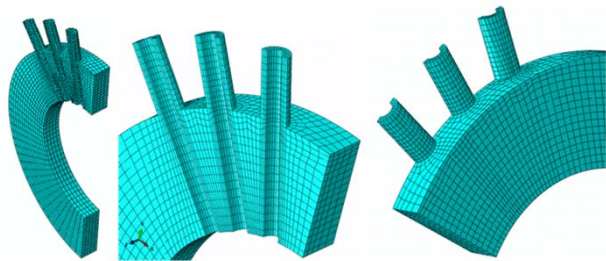
- Latest nickel-based superalloys 740H and H282 have successfully been tested for fireside corrosion and steam-side oxidation in coal-fired boiler environments demonstrating applicability to superheater and reheater tubing in AUSC conceptual design (GE's Plant Barry steam loop and others)
- These alloys have also been tested for high temperature creep and fatigue properties in laboratory specimens (ORNL and GRC).



Thick-walled Cycling Header Development Objectives

Objectives of Phase I are to demonstrate:

- Adequacy of the latest available high strength nickel-based superalloys for severe thermal cycling (warm-start) fatigue transients
- Adequacy of thick-walled header components in full-scale conceptual AUSC boiler design for creep life



Fatigue Life

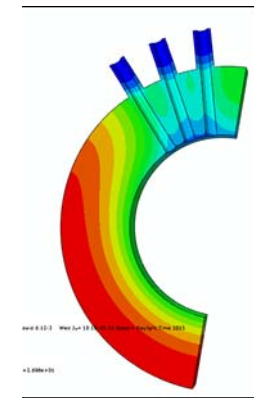
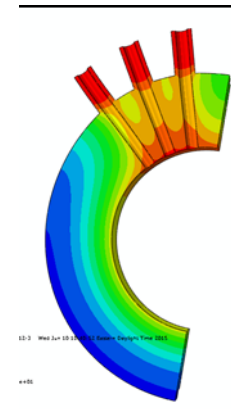
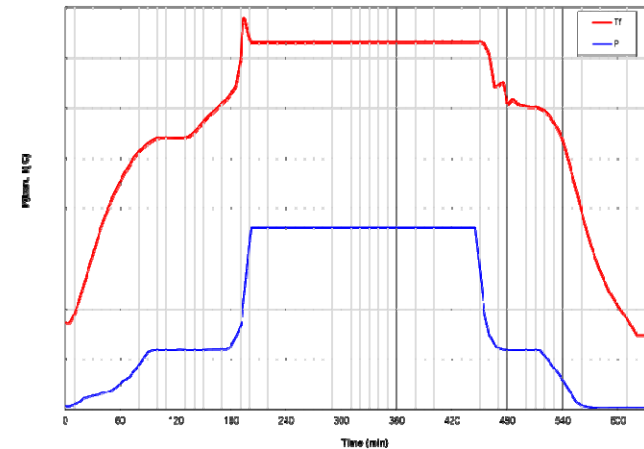
Creep Life

This document contains Proprietary information of the General Electric Company and may not be used or disclosed to others without the written permission of General Electric Company

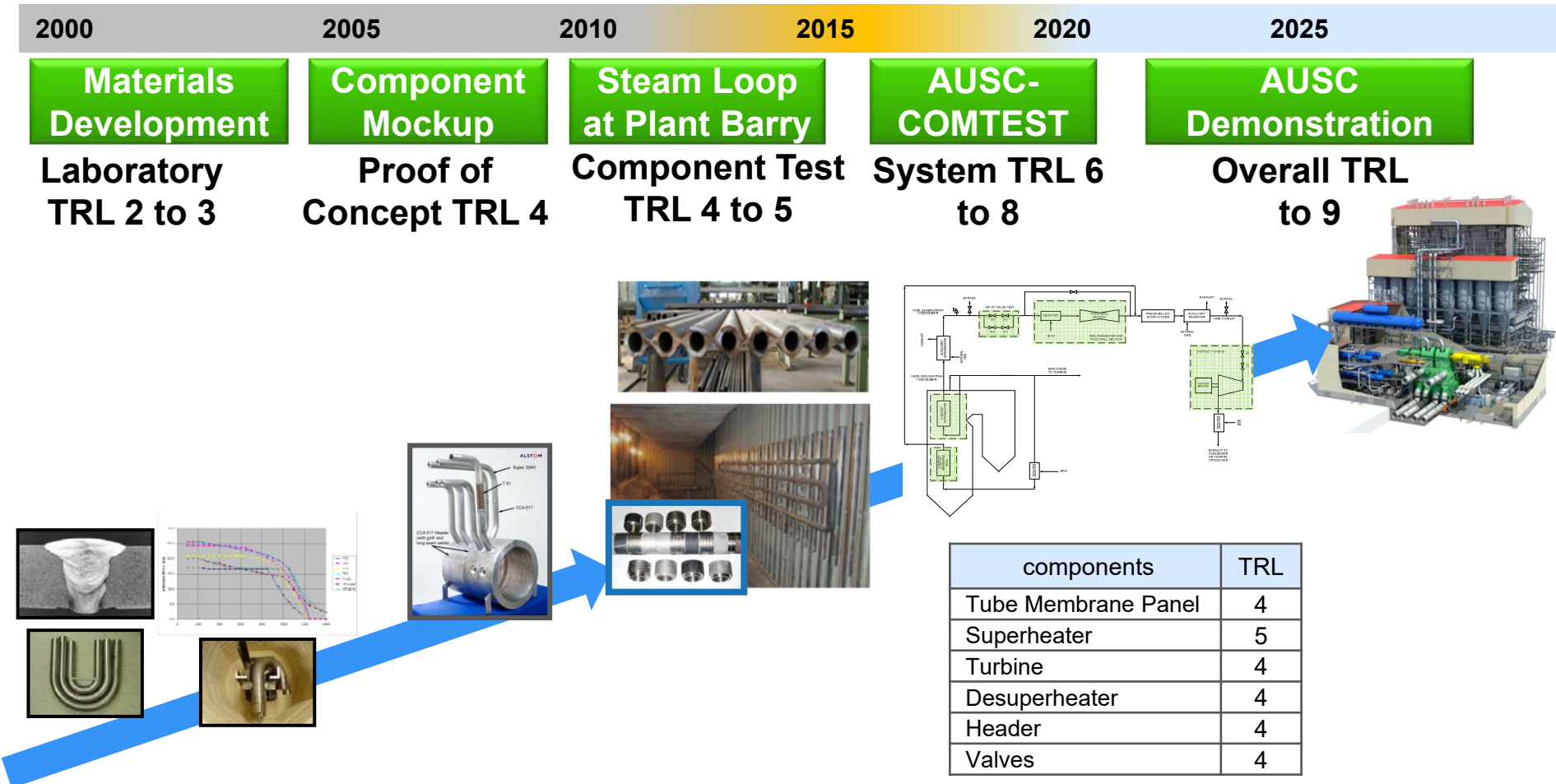
Thick-walled Cycling Header Development Objectives

Phase I project scope

- Design a simulated cycling header system for a ComTest-AUSC pilot demonstration to be performed in Phase II of ComTest-AUSC
- Develop analytical tools to be used through CFD for heat transfer rates in
 - full-scale AUSC conceptual design SHOH
 - simulated ComTest-AUSC cycling header
- Perform long term creep life assessment of AUSC conceptual design SHOH through latest available material creep constitutive equations using continuum damage mechanics (CDM) approach.
- Participate in host facility selection for ComTest-AUSC
- Detailed design layout of the ComTest-AUSC header system including instrumentation that will be required for monitoring the cycling transient conditions



Thick-walled Cycling Header Development Roadmap to AUSC Demo

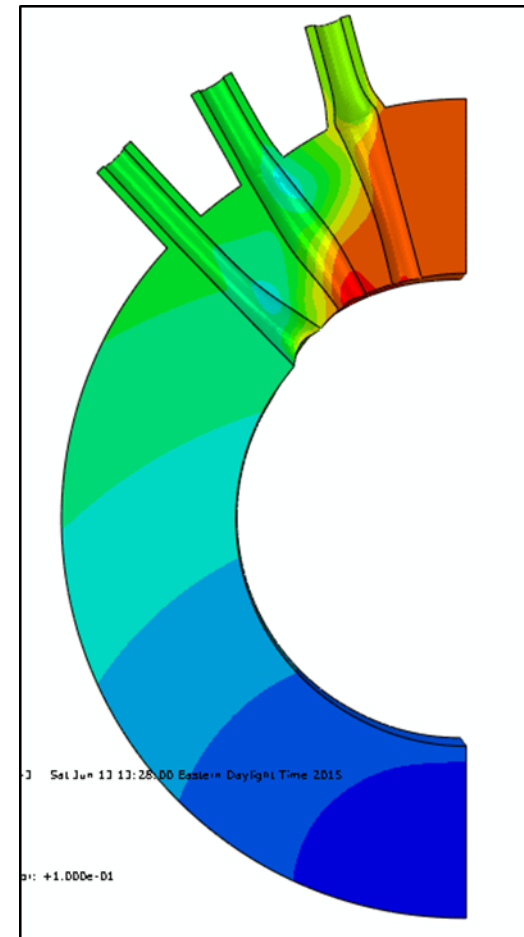


Current DOE-sponsored programs designed to bring components to TRL 5; AUSC-COMTEST will bring system to TRL 7 or 8

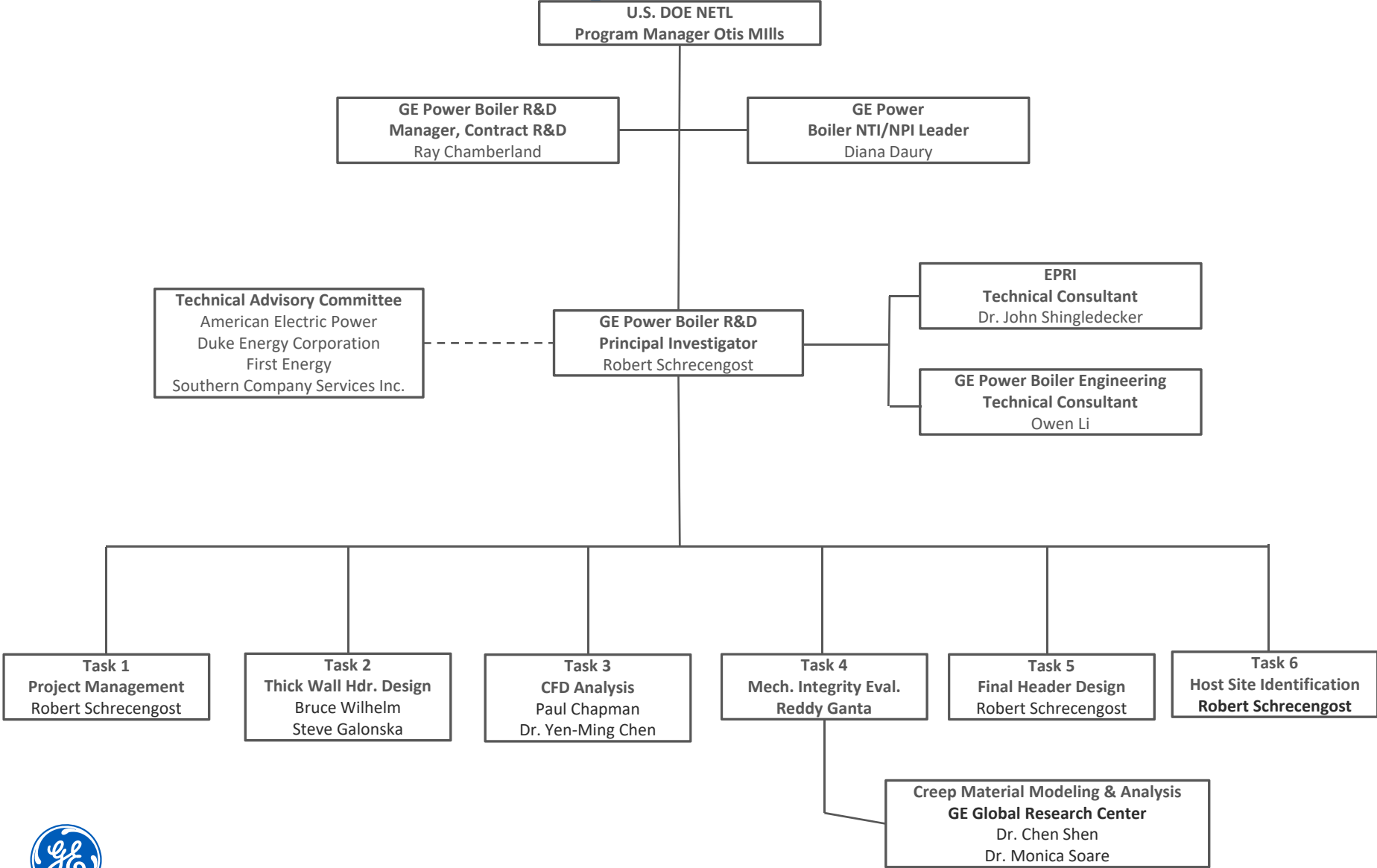


Thick-walled Cycling Header Development Potential Significance

- Demonstrate adequate fatigue cycling design life for the critical pressure part components in the AUSC boiler with high ramp rates required for coal fired power plants.
- Provide design guidelines for the dynamic operation of the boiler for design conditions that result in better material fatigue conditions
- Assess the long term creep life of critical pressure part components at AUSC temperatures using the latest state-of-the-art material constitutive models for high strength nickel alloys
- Design a header component for ComTest-AUSC with full analytical evaluations and simulations to increase the probability of a successful test in Phase II of this project



Thick-walled Cycling Header Development Project Team



Thick-walled Cycling Header Development Technical Approach

Phase I of the project has six major Tasks

Task 1: Project Management and Reporting

Task 2: Conceptual Design of Cycling Header

Task 3: CFD Analysis of Thick-walled Header

Task 4: MI Evaluation of Header, Tubing, and Welds

Task 5: Design of Thick-walled Header Component

Task 6: Host facility Selection for ComTest-AUSC



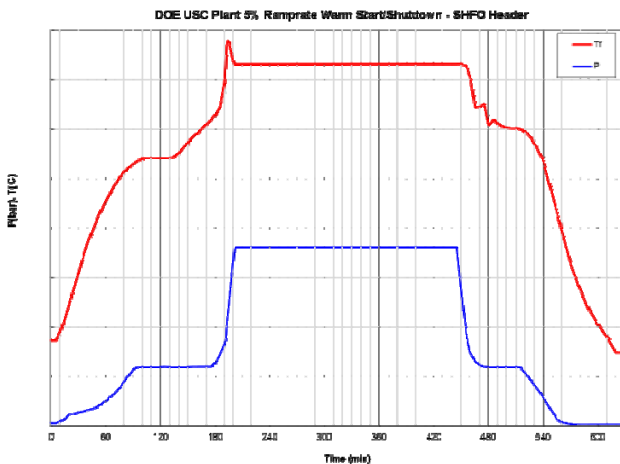
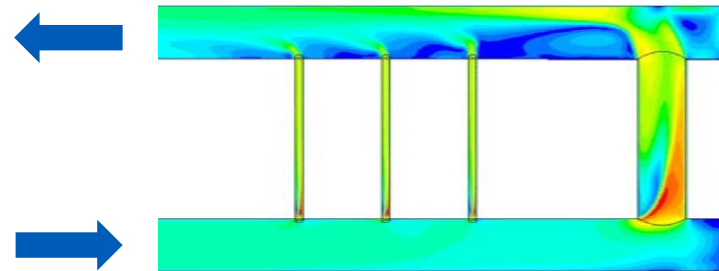
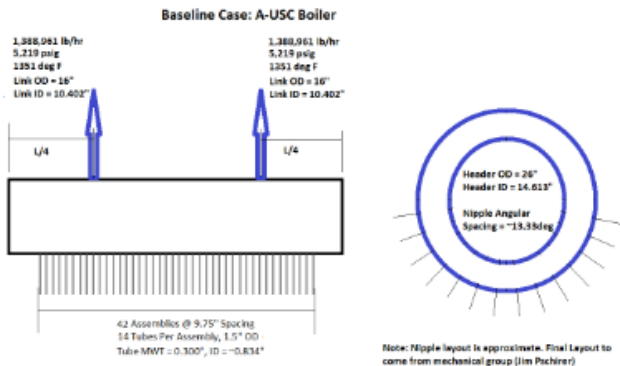
Thick-walled Cycling Header Development Deliverables

- Task 2: Process design of ComTest-AUSC cycling header layout and flow conditions (input to CFD group, done in 2016)
- Task 3: CFD Analysis to identify heat transfer rates (input to MI group, done in 2016)
 - Flow and heat transfer rates for the 1000 MWe full-scale conceptual AUSC SH outlet header at full and half load conditions
 - Flow and heat transfer rates for the ComTest-AUSC cycling header for RH steam parameters (pressure, temperature and flow rates) at two steady-state conditions

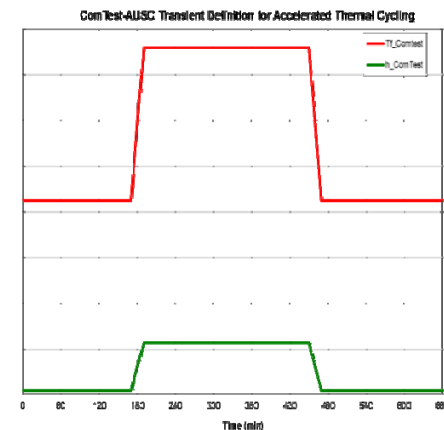


Thick-walled Cycling Header for ComTest-AUSC Technical Approach

Task 2 Process Design of Thick-walled Cycling Header



Full-scale AUSC SHOH design and transient



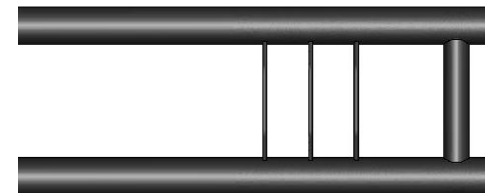
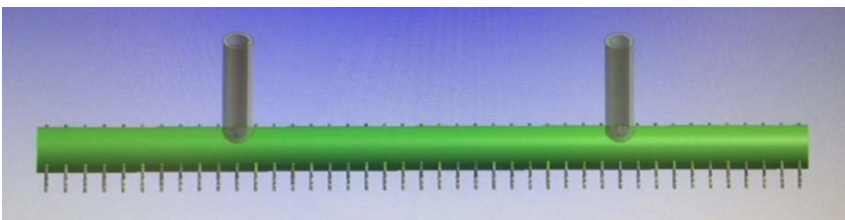
ComTest-AUSC cycling header design and transient



Thick-walled Cycling Header Development Technical Approach

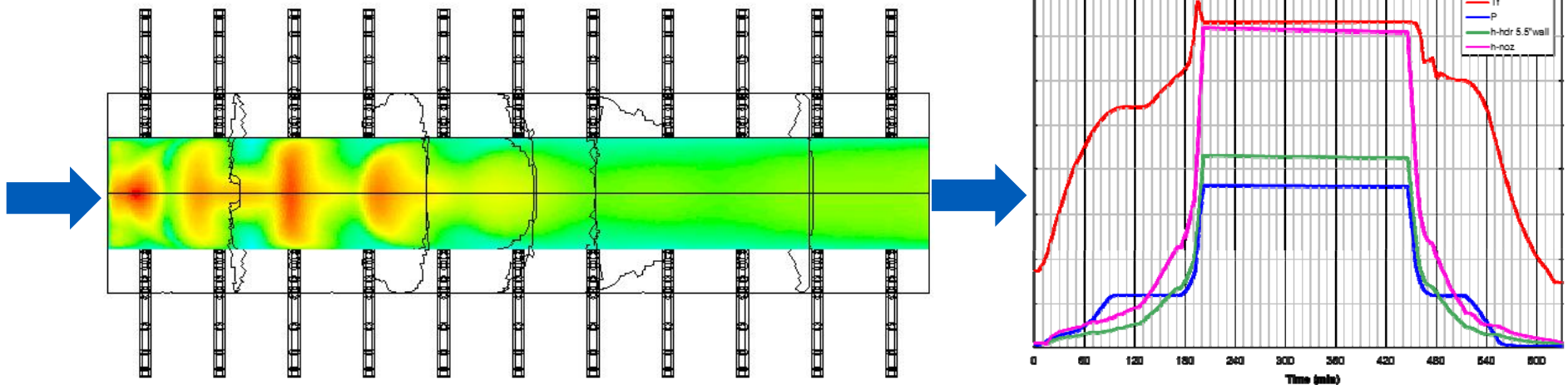
Task 3: CFD Analysis of Thick-walled Cycling Header

- AUSC conceptual design SH outlet header CFD analysis
- ComTest-AUSC CFD Model
 - Host Site currently at 600 psi (currently assumed & proceeding)
 - Southern Company with 3500 psi (if decided, design needs to be updated to Southern's flow conditions)
- Benchmark examples from GE Power CFD experience
 - Straight Pipe Flow CFD HT Coefficient Prediction
 - Header - HTC for Molten Salt



Thick-walled Cycling Header Development Technical Approach

- AUSC SHO Header pipe size 26" OD, 5.7" wall thickness
- Material Inconel 740H or Haynes 282
- Flow rate 5.6M lbs/hr
- Temperature 1350°F, Pressure 5200 psig



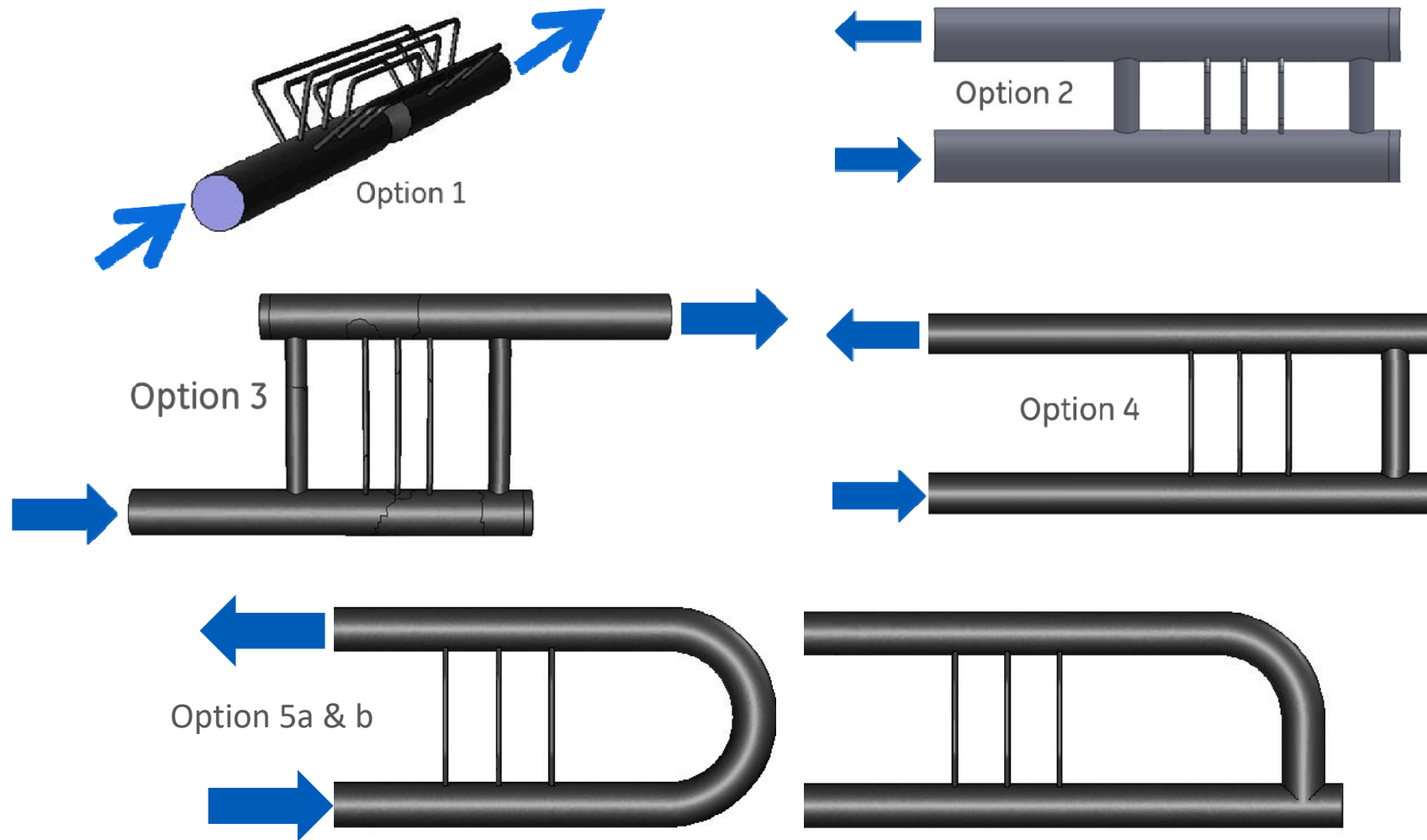
Thick-walled Cycling Header Development Technical Approach

ComTest-AUSC header design

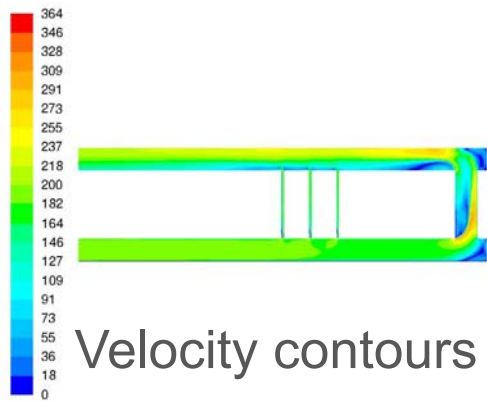
- Five different cases analyzed by CFD for flow rates, velocity and heat transfer film coefficients
- USC SH steam pressure at 3500 psi
 - 100k to 130k lbs/hr flow rate
 - 1400°F temperature
 - Pipe ID 4 to 8", wall thickness 3"
- USC RH pressure at 600 psi
 - 100k to 130k lbs/hr flow rate
 - 1400°F temperature
 - Pipe ID 4 to 8", wall thickness ~3"



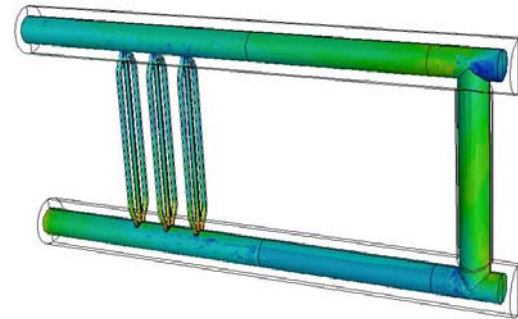
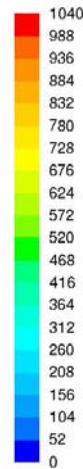
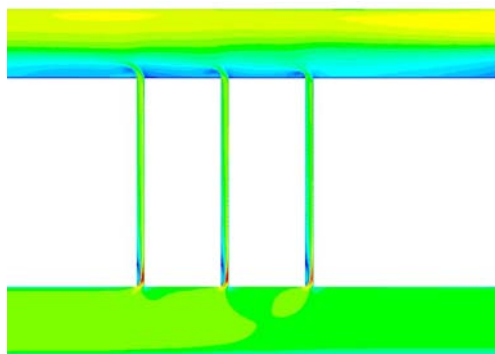
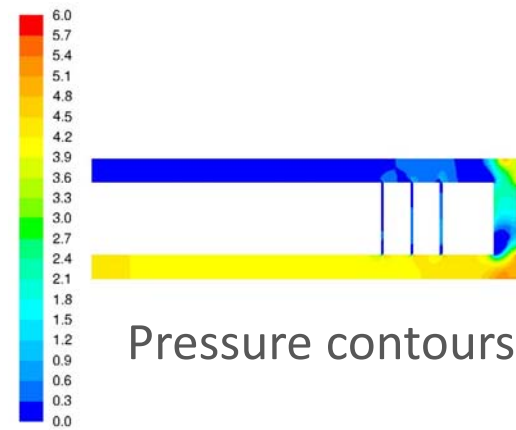
Thick-walled Cycling Header Development Technical Approach



Thick-walled Cycling Header Development Technical Approach



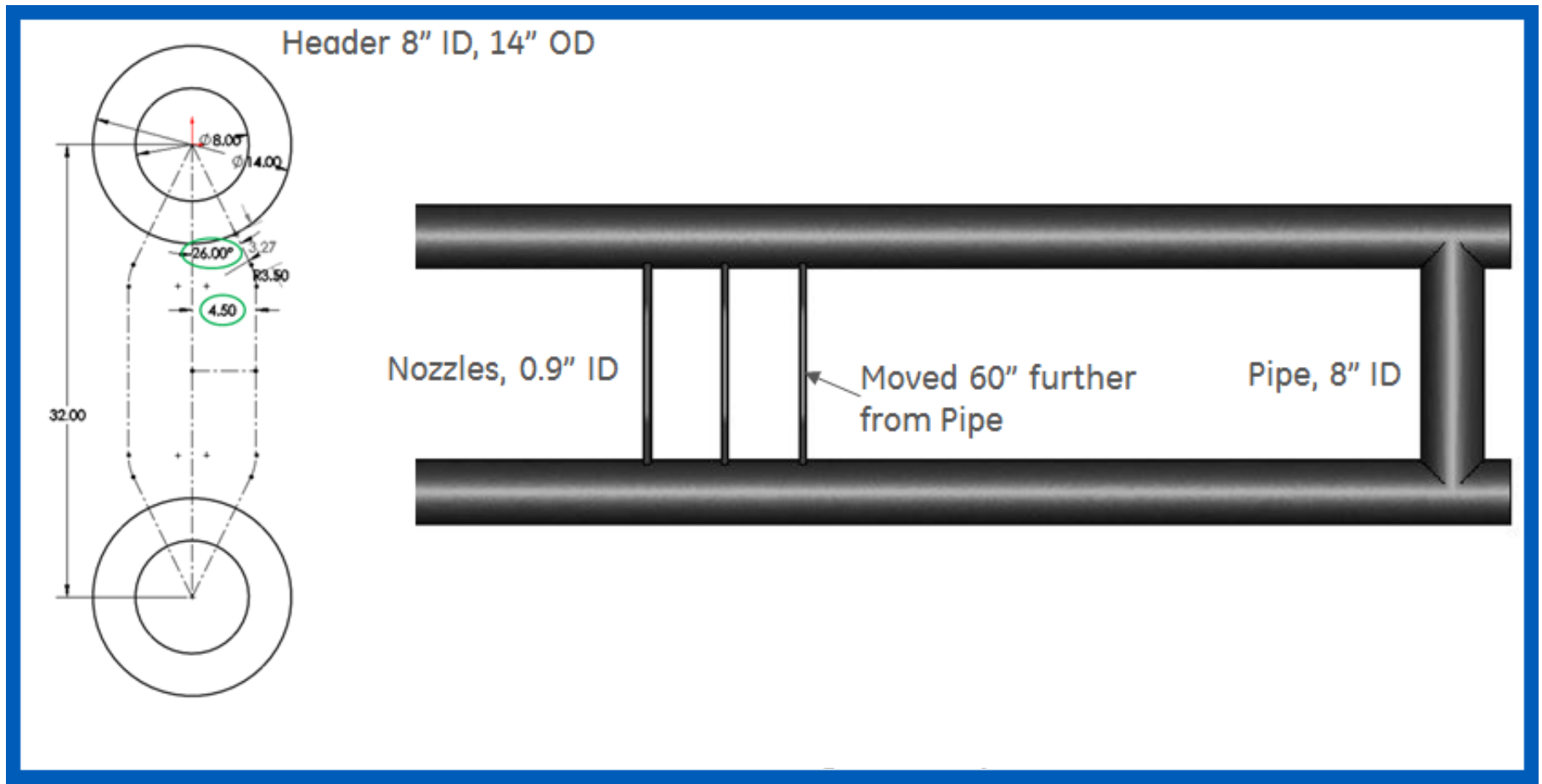
Flow Split: 12.4% 87.6%



Heat transfer rates



Thick-walled Cycling Header Development Technical Approach



Thick-walled Cycling Header Development Deliverables

- Task 4: Mechanical integrity evaluation (final report being drafted this year)
 - Benchmark creep analysis of test specimens using the CDM creep models
 - Creep life assessment of Conceptual AUSC SHOH with H282 CDM models
 - Transient analysis and fatigue evaluation of ComTest-AUSC cycling header
- Task 5: Design layout of ComTest-AUSC cycling header system including instrumentation type and locations (final report being drafted this year)



Thick-walled Cycling Header Development Technical Approach (with two goals)

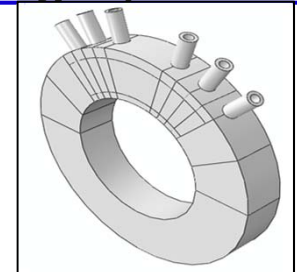
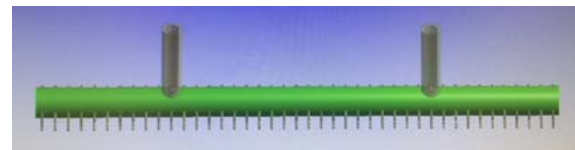
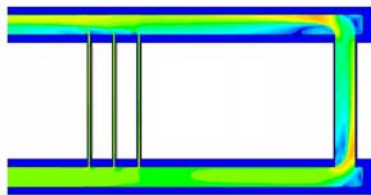
Task 4: Mechanical Integrity Evaluation

4a: ComTest-AUSC Fatigue Cycling

- Design ComTest header configuration
- Includes tube penetrations
- No branch nozzle in CFD studies
- Accelerated **thermal cycling**
- Test temperature 760°C (1400°F)
- Test pressure 41 bar (600psig)
- Materials: 740H & H282
- Transient cycle configured using two steady-state CFD analyses
- Fatigue data: Literature & ORNL data
- MI analysis for thermal transients
- Assess **fatigue life (no creep)**

4b: Conceptual AUSC SHOH Creep Life

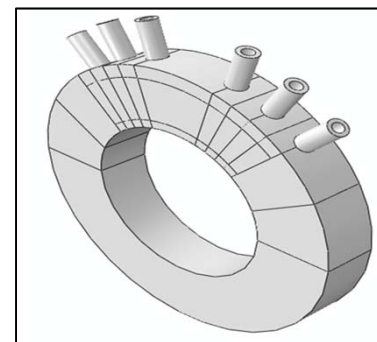
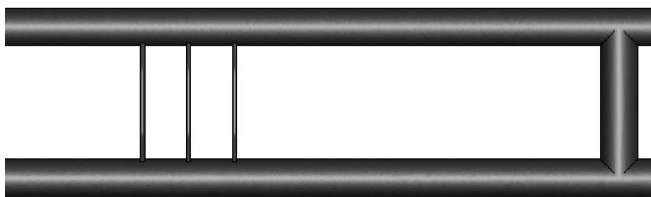
- 1000MW AUSC SHO header design
- Includes tubes and branch connection
- Welds included but with a knock-down factor over the base material properties
- Temperature 730°C (1350°F)
- Pressure 220-350 bar (3200-5200psig)
- Material: Base H282
- Heat transfer rates from CFD study for the 1000 MW conceptual AUSC SHOH
- Use GE **CDM** models
- MI analysis for creep damage
- Assess **creep life (no fatigue)**



Thick-walled Cycling Header Development Technical Approach

Task 4a: ComTest-AUSC cycling header fatigue assessment

- Comtest-AUSC cycling header fatigue analysis for test condition accelerated fatigue cycling transients
 - Actual test header design configuration with upstream header 740H and downstream header H282
 - Includes tube penetrations
 - No branch nozzle
 - Accelerated test cycling transients for fatigue
 - Assess for fatigue usage with 740H and 617 material fatigue data

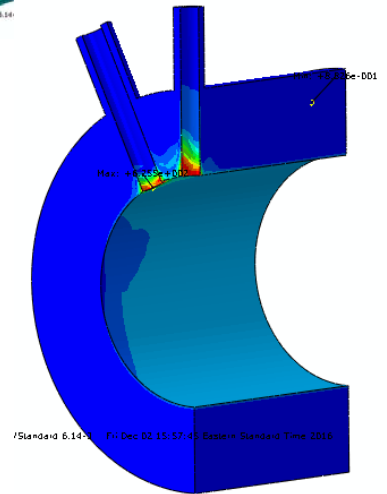
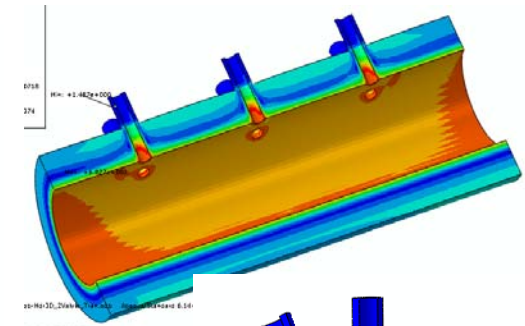
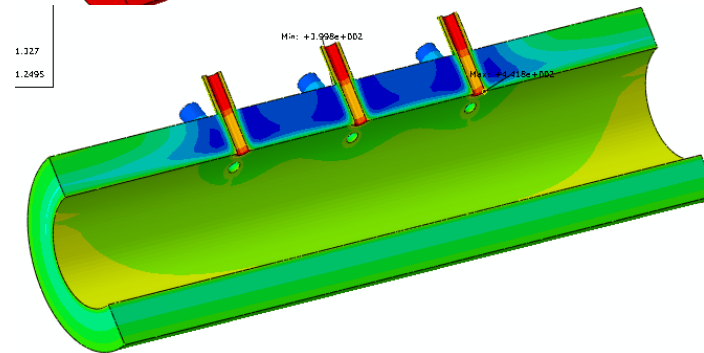
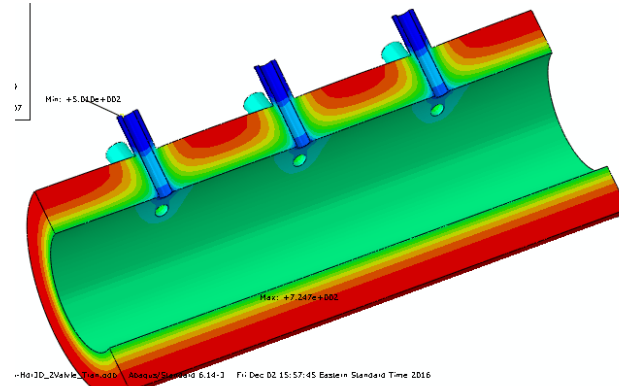
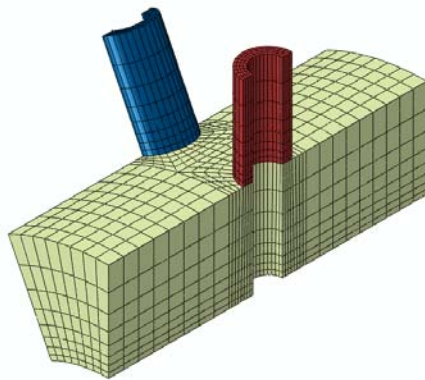
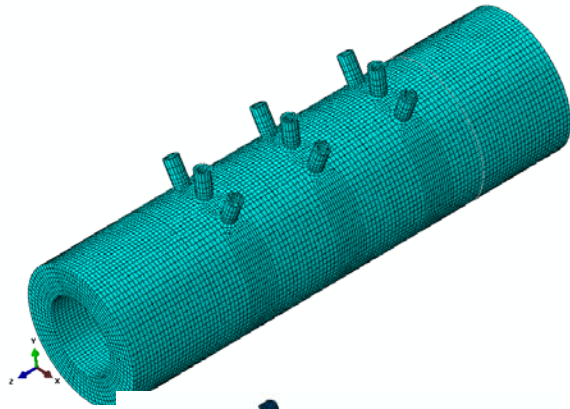


ComTest-AUSC cycling header

ComTest-AUSC header model

Thick-walled Cycling Header Development Technical Approach

ComTest cycling header stress analysis



ComTest header models

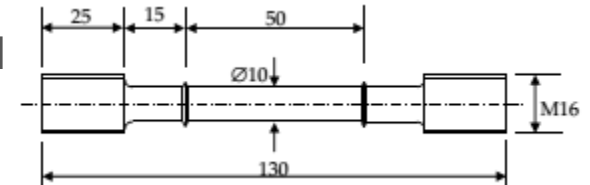
Temperature contours

Stress contours

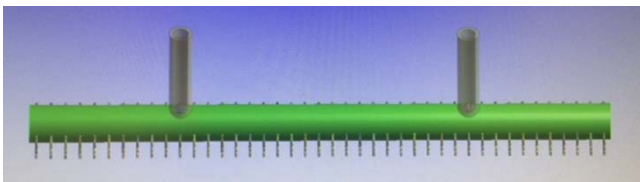
Thick-walled Cycling Header Development Technical Approach

Task 4b: Full-scale AUSC SHOH Creep Life Assessment

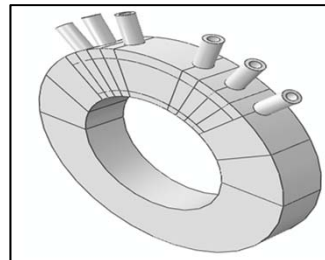
- Long term creep life assessment of full-scale AUSC SHO header using high temperature superalloy CDM models for analysis includes:
 - inlet tubes with welds
 - “Tee” section of a header with one branch nozzle and weld
 - H282 base metal model only for now
 - H282 weld material model if available in in Phase I
 - 740H base and weld material models in the future when available



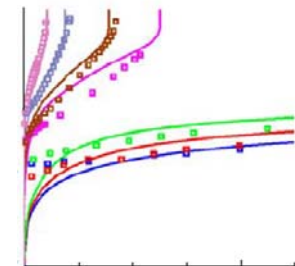
Benchmark Test Specimen



Full-scale AUSC SHOH Model



AUSC SHOH Analysis Model



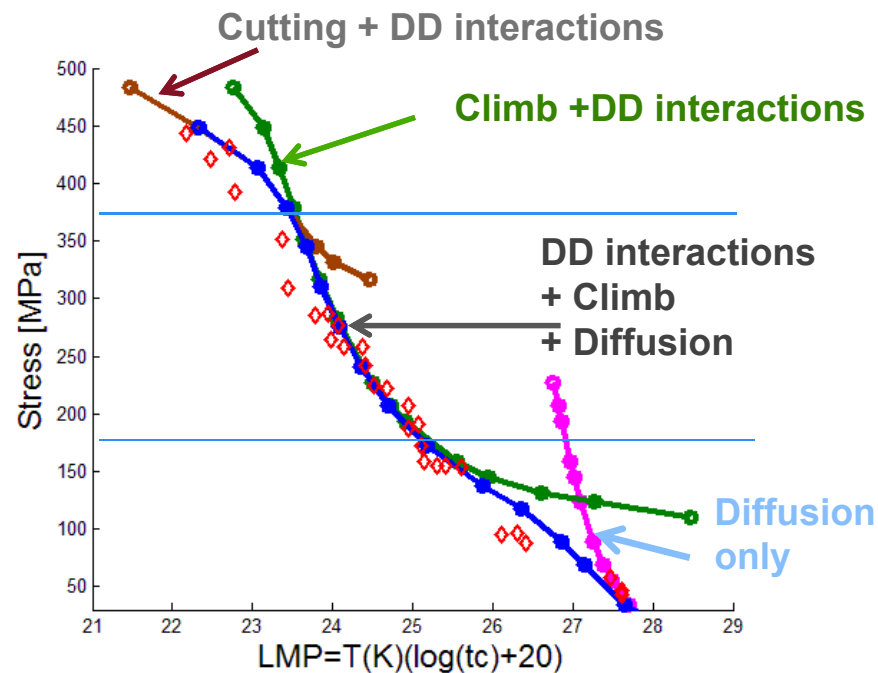
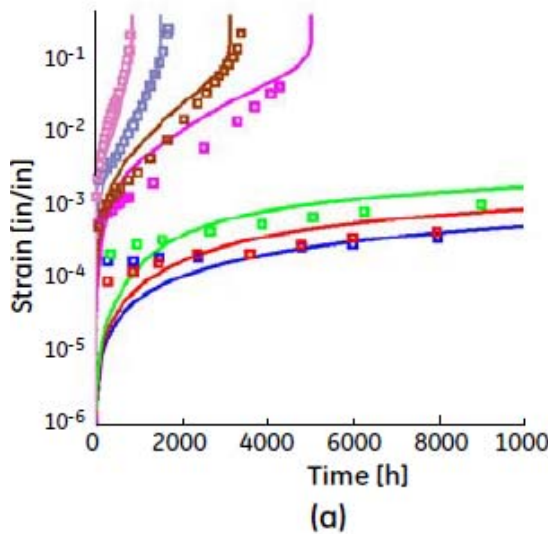
H282 CDM creep model data



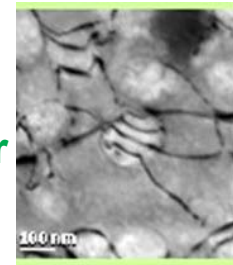
Thick-walled Cycling Header Development H282 Constitutive Creep Model

Develop macroscopic models capturing the effect physical micro-mechanisms and microstructure (e.g. dislocation climb-bypass & diffusion creep)

Base Metal H282, Creep model 1400-1700°F



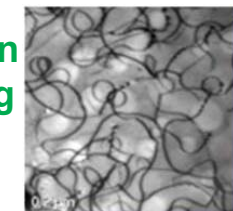
Shear



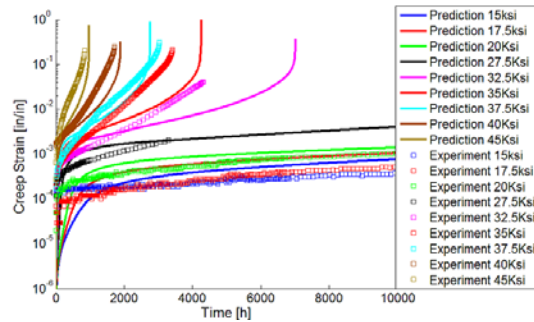
Climb



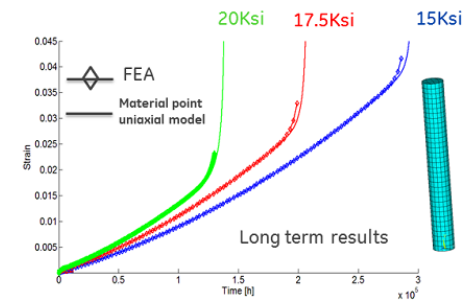
Orowan looping



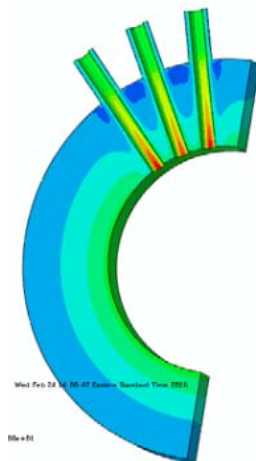
Thick-walled Cycling Header Development H282 creep model development & application



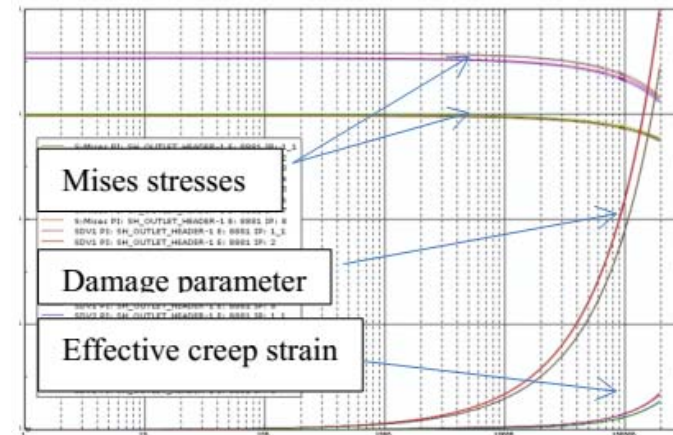
Test specimen creep strain data



Benchmark FEA Verification



Damage parameter contours



Borehole stress, creep strain & damage parameter history



Thick-walled Cycling Header Development

Constitutive creep model - Dislocation climb

$$\varepsilon^{creep} = \varepsilon^{disloc} + \varepsilon^{diffusion}$$

Total creep – effect of dislocation and diffusion creep mechanisms

$$\dot{\varepsilon}^{disloc} = A(T)\rho(T)f(T)(1-f(T)) \left(\sqrt{\frac{\pi}{4f(T)}} - 1 \right) \sinh \left(\frac{\sigma_{eff} - \sigma_{climb}(T) - \sigma_0(T)}{MkT} \lambda(T)b^2 \right)$$

$$\sigma_{climb}(T) = \frac{2f(T)}{1+2f(T)} \sigma_{eff} \left[1 - \exp \left(-\frac{1+2f(T)}{2(1-f(T))} E(T) \frac{\varepsilon^{disloc}}{\sigma_{eff}} \right) \right] \quad \text{climb}$$

$$\sigma_0 = 0.25MG(T)b\sqrt{\rho}, \quad \rho = \rho(C)$$

D-D interaction

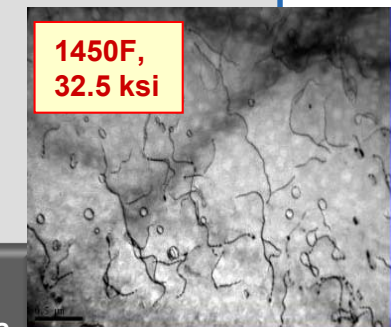
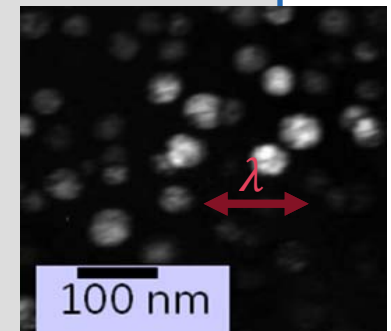
$$\rho = \begin{cases} \rho_i + (\rho_f - \rho_i)\varepsilon/\varepsilon^{crit} & \text{if } \varepsilon \leq \varepsilon^{crit} = C\sigma_{eff} \\ \rho_f & \text{if } \varepsilon > \varepsilon^{crit} = C\sigma_{eff} \end{cases}$$

$$\sigma_{eff} = \frac{\sigma_{applied}(1 + \varepsilon)}{1 - \omega}$$

$$\omega = \omega_{diff} + \omega_{disloc}$$

$$\dot{\omega}_{disloc} = D\dot{\varepsilon}^{disloc}$$

B. F. Dyson, MST 2009, p213



H282 model developed for high temperatures

Developed under DE-FE0005859 Modeling Creep-Fatigue-Environment Interactions in Steam Turbine Rotor Materials for Advanced Ultra-supercritical Coal Power Plants. Final Report. Chen Shen, GE Global Research



Thick-walled Cycling Header Development

Constitutive creep model - Diffusion

$$\dot{\epsilon}^{diffusion} = \dot{\epsilon}^{lattice_diff} + \dot{\epsilon}^{boundary_diff} + \dot{\epsilon}^{cavity_boundary_diff} + \dot{\epsilon}^{cavity_surface_diff}$$

$$\dot{\epsilon}^{boundary_diff} = 3\pi\xi \left(\frac{l}{d}\right)^3 \sigma_{applied}(1 + \epsilon^{creep})$$

(Cocks and Ashby, Progress in Mater. Sci. 1982)

$$\dot{\epsilon}^{lattice_diff} = \xi\beta\sigma_{applied}(1 + \epsilon^{creep})$$

where $\beta = \frac{3D_V l^3}{D_B\delta_B d^2}$

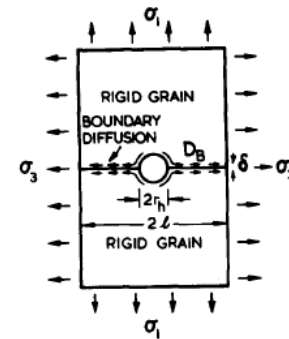
D_V is a constant

$$\xi = F \frac{4D_B\delta_B\Omega}{l^3k_B T}$$

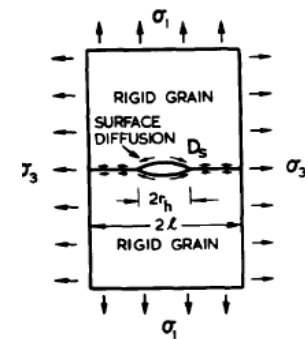
$D_B\delta_B$ is a constant

$$\dot{\epsilon}^{cavity_boundary_diff} = \xi \frac{l}{d} \frac{\sigma_{applied}}{\ln(1/\omega_{boundary_diff})}$$

$$\dot{\epsilon}^{cavity_surface_diff} = \xi\alpha \frac{\sqrt{\omega_{surface_diff}}\sigma_{applied}^2}{(1-\omega_{surface_diff})^3}$$



Void growth by boundary diffusion



Void growth by surface diffusion

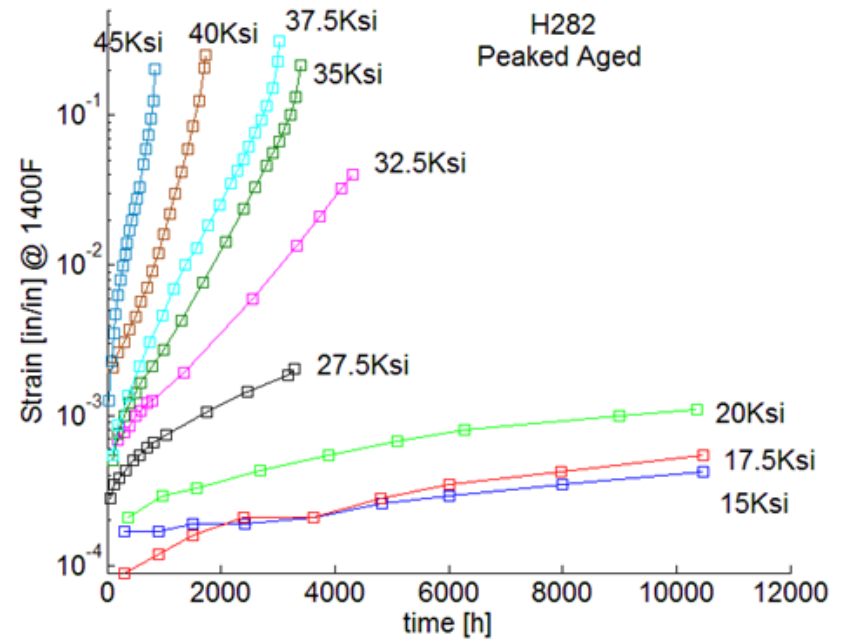
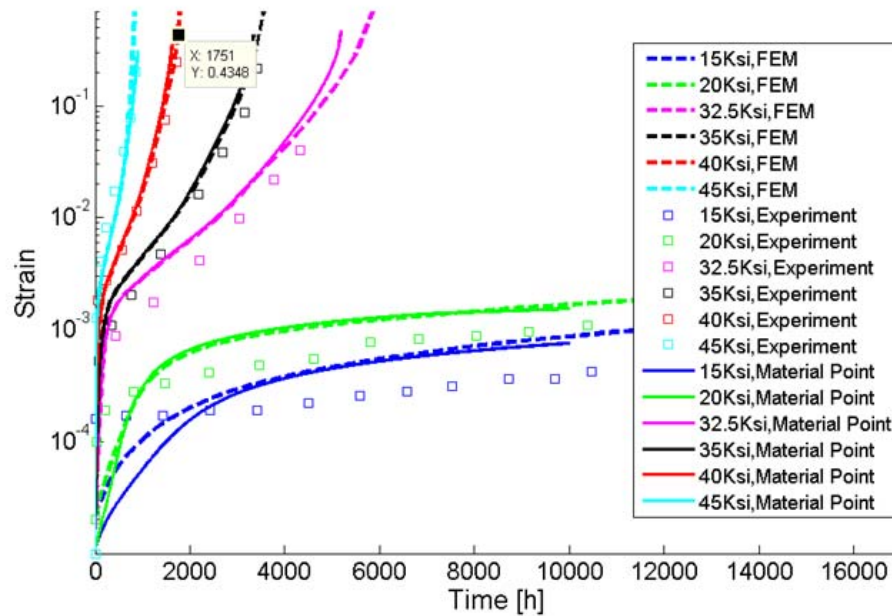
$$\alpha = \frac{D_S\delta_S}{D_B\delta_B} \frac{1}{\sqrt{2}} \frac{l^2}{d\gamma}$$



H282 model adapted for high temperatures

Thick-walled Cycling Header Development 2017 completion

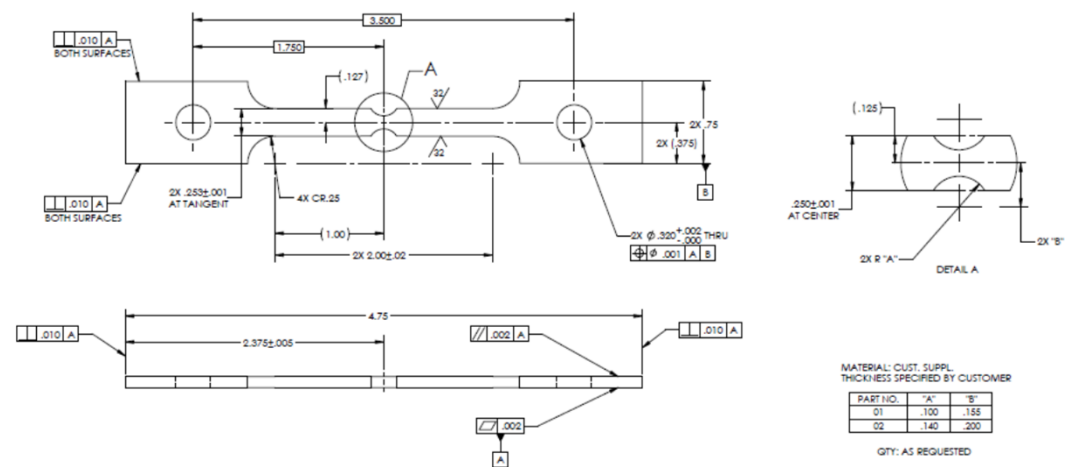
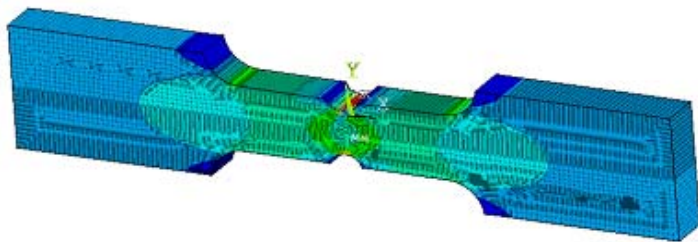
3D creep constitutive model validation



Thick-walled Cycling Header Development 2017 completion

Notched Bar Creep Tests

- H282 notched bar creep tests, 100 to 1000 hours
- Digital image correlation
- Simulates three-dimensional multi-axial stress effect
- Validate 3D creep constitutive models at 1400°F
- Suitable for boiler component applications

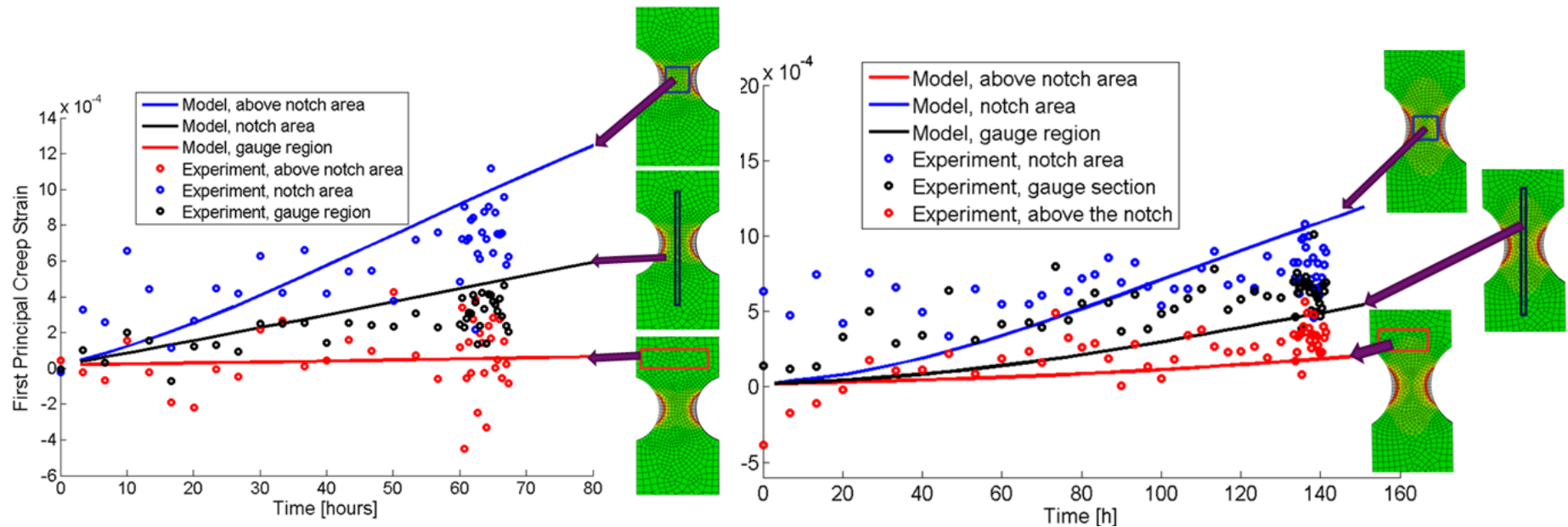


Tube Membrane Panel Project | March 2016

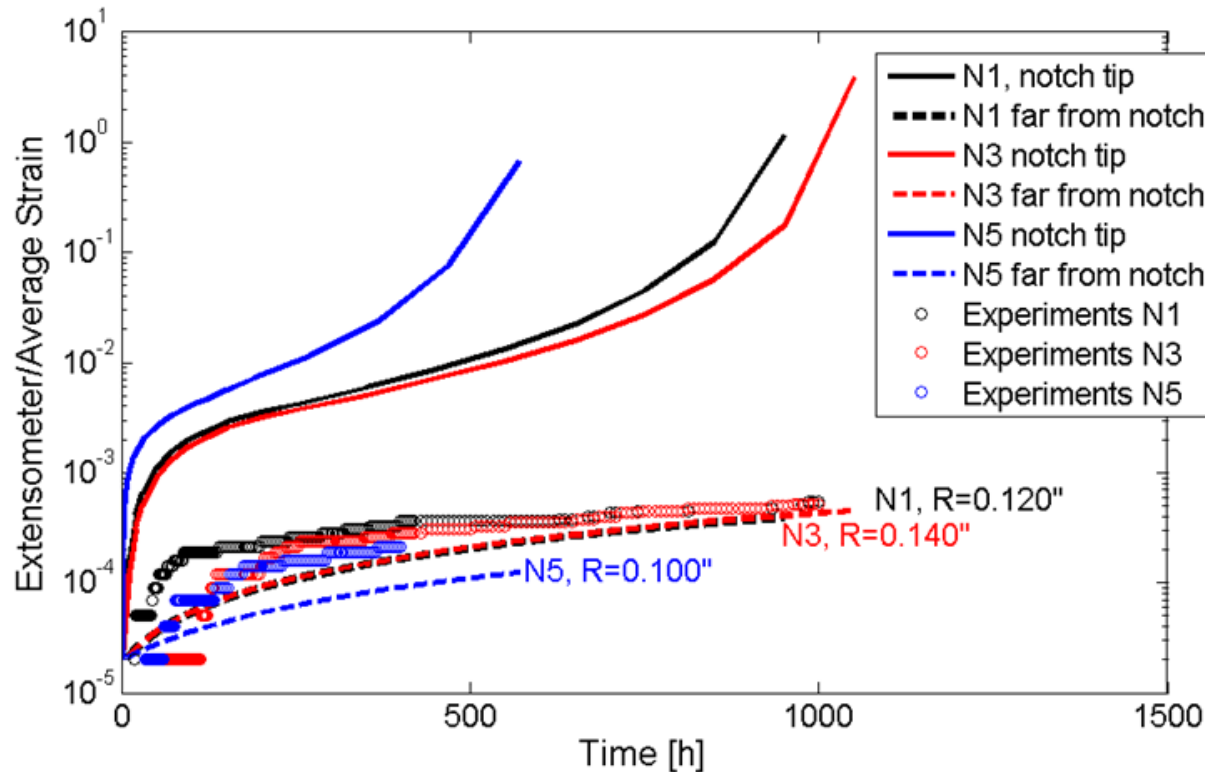
This document contains Proprietary information of the General Electric Company and may not be used or disclosed to others without the written permission of General Electric Company

Thick-walled Cycling Header Development 2017 completion

3D first principal strain distribution



Thick-walled Cycling Header Development 2017 completion



Axisymmetric model of the notched sample



Thick-walled Cycling Header Development Technical Approach

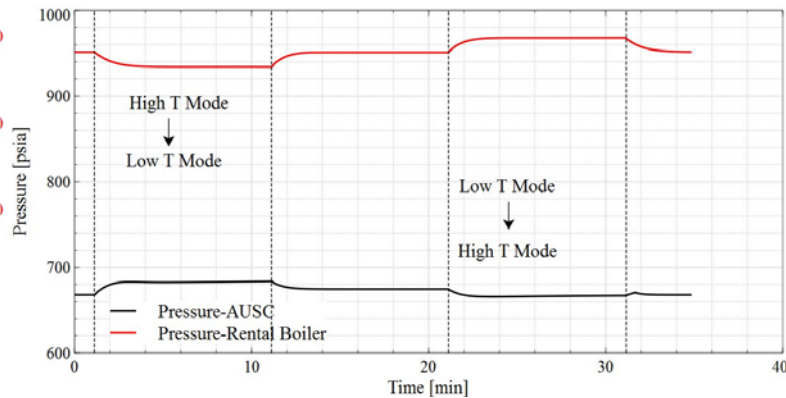
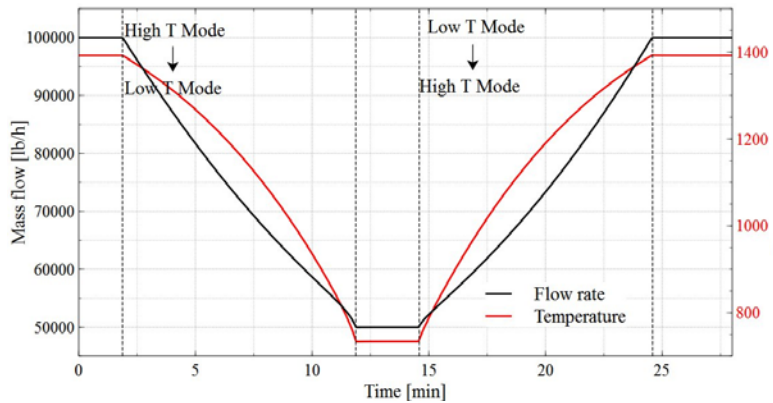
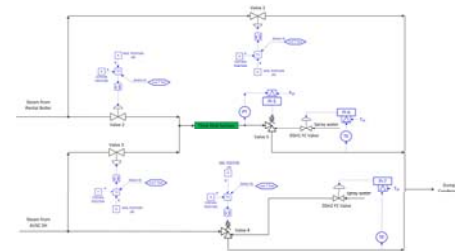
Task 5: Design of Thick-walled Header Component

- Design layout of the ComTest-AUSC cycling header including desuperheater
- Identify instrumentation and location on the header for measurement of field data
- Define ComTest-AUSC test program including transient cycles (flow rates, temperature, pressure, ramp rates)
- Develop preliminary drawings for the layout for ComTest-AUSC header system
- Define ComTest-AUSC program thick-walled header system “flange-to-flange”

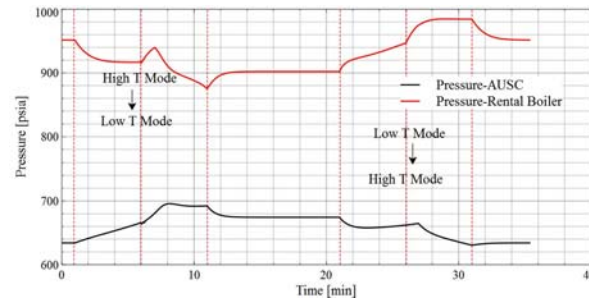
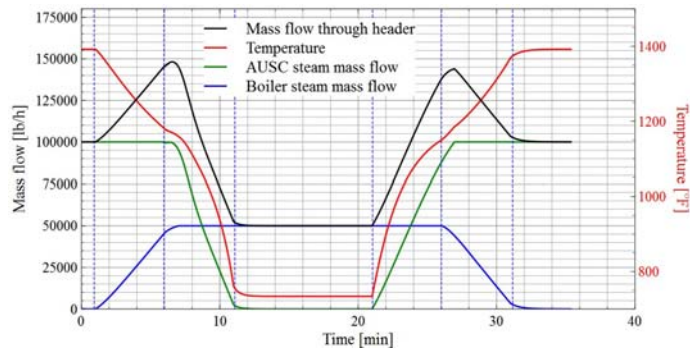


Thick-walled Cycling Header Development APROS Transient Simulation

- Valve operating scenario at RH pressure
- Ramp rates
- Low and high temperature flow mix



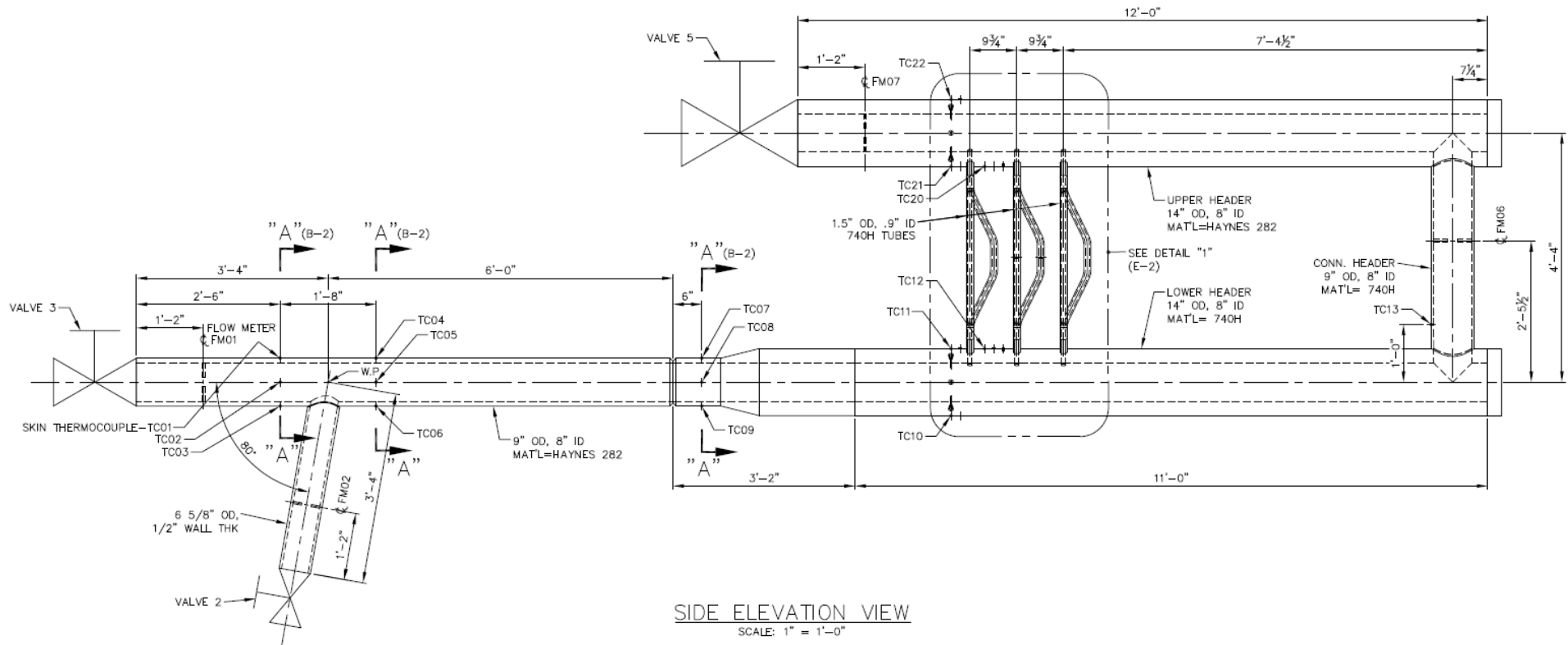
flow rate & temperature with 4 valves operating simultaneously



flow rate & temperature with control valves operating in two steps



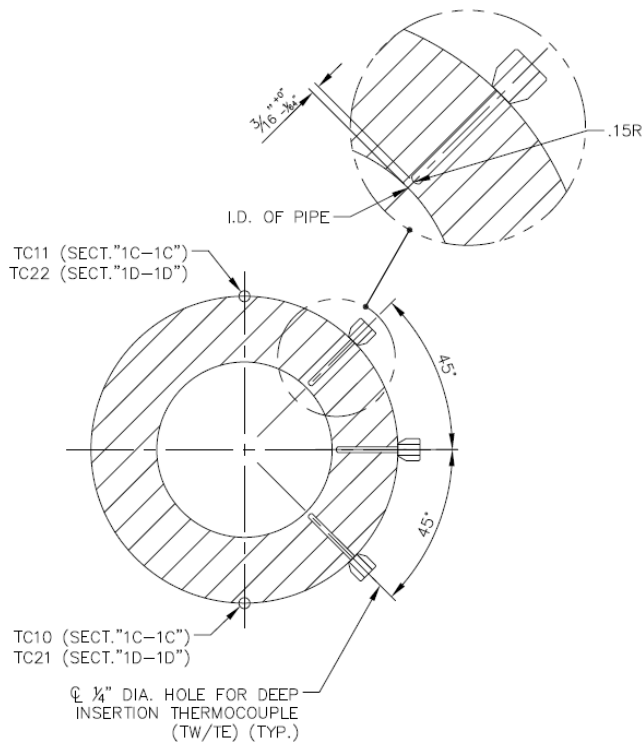
Thick-walled Cycling Header Development Mixing Tee and Header design



Instrumentation	Number
Surface (skin) thermocouples	22
Buried wall thermocouples	6
Surface strain gauges	8
Flow meters	7

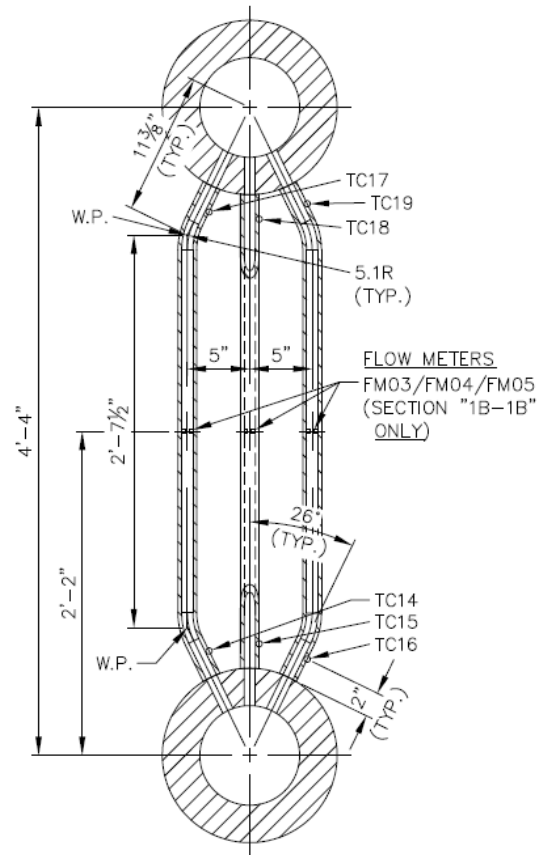


Thick-walled Cycling Header Development Header Instrumentation design



SECTION "1C-1C" (F-2)
(INLET HEADER)

SECTION "1D-1D" (F-2)
(OUTLET HEADER)
SCALE: 3" = 1'-0"



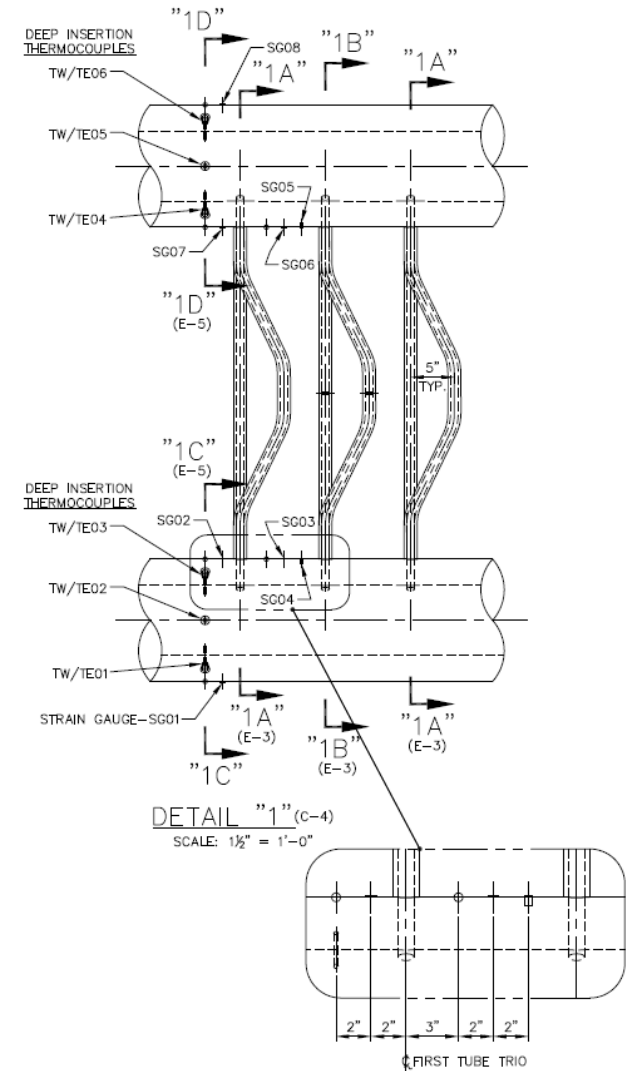
SECTION "1A-1A" (E-2)

(AS SHOWN, WITHOUT FLOW METERS)

SECTION "1B-1B" (E-2)

(AS SHOWN, WITH FLOW METERS)

SCALE: 1½" = 1'-0"



Thick-walled Cycling Header Development Technical Approach

Task 6: Host facility Selection for the ComTest-AUSC

- Identify the available site parameters for input to the cycling header design – December 2015
- Design parameters with flow rates of 133,000 lbs/hr, pressure of 600psig and temperature of 1400°F are used in the process design and CFD analyses.
- A change of design parameters to lower steam flow and AUSC SH pressure conditions will require a new process design and CFD analysis and changes in the ComTest cycling header layout.
- Final decision on the host site for the ComTest-AUSC with (or without) the thick-walled cycling header is expected in Q2 of 2017.



Thick-walled Cycling Header Development Project Publications

First application of superalloy (H282 base metal) creep constitutive model applied for long term creep life assessment of conceptual full-scale AUSC SHOH component.

EPRI | ELECTRIC POWER RESEARCH INSTITUTE

EPRI 2016 Creep Fatigue Workshop In Collaboration with ASME PVP

July 21-22, 2016
HYATT REGENCY VANCOUVER
655 BURRARD STREET
VANCOUVER, BC V6C 2R7 CANADA

Contacts:
JONATHAN PARKER, PHD, CENG, FIM, FIMECHE.
ELIZABETH BENTON (EBENTON@EPRI.COM)



Creep Life Assessment of High Temperature Advanced Ultrasupercritical (AUSC) Conceptual Boiler Thick-Walled Pressure Components Using Continuum Damage Mechanics Approach

Reddy Ganta
GE Steam Power Systems, 200 Great Pond Drive, Windsor, CT 06095, USA
Monica Soare and Chen Shen
GE Global Research, 1 Research Circle, Niskayuna, NY 12309, USA



Thick-walled Cycling Header Development Acknowledgements

This material is based upon work supported by the Department of Energy under Award Number DE-FE0026183.

Disclaimer

This report was prepared as an account of work sponsored by an agency of the United States Government. Neither the United States Government nor any agency thereof, nor any of their employees, makes any warranty, express or implied, or assumes any legal liability or responsibility for the accuracy, completeness, or usefulness of any information, apparatus, product, or process disclosed, or represents that its use would not infringe privately owned rights. Reference herein to any specific commercial product, process, or service by trade name, trademark, manufacturer, or otherwise does not necessarily constitute or imply its endorsement, recommendation, or favoring by the United States Government or any agency thereof. The views and opinions of authors expressed herein do not necessarily state or reflect those of the United States Government or any agency thereof.

Information disclosed herein is furnished to the recipient solely for the use thereof as has been agreed upon with ALSTOM and all rights to such information are reserved by ALSTOM. The recipient of the information disclosed herein agrees, as a condition of its receipt of such information, that ALSTOM shall have no liability for any direct or indirect damages including special, punitive, incidental, or consequential damages caused by, or arising from, the recipient's use or non-use of the information.



